

A NEW GENERATION OF INSULATION MATERIALS



K-FLEX ST/SK

REVOLUTIONARY NEW PRE-CUT PIPE INSULATION
WITH A SPECIAL PRESSURE-SENSITIVE ADHESIVE

New

- NEW "PEEL & SEAL"
FAST ADHESIVE
SYSTEM
- NEW INSUL-LOCK®
TECHNOLOGY
- EASY HANDLING &
INSTALLATION
- SAVE 50% ON
INSTALLATION TIME
- SUPERIOR COLD
WEATHER FLEXIBILITY



L'ISOLANTE K-FLEX

www.kflex.com

K-FLEX

ST/SK



**INSUL-LOCK®
SELF-SEAL
CLOSURE SYSTEM
WITH SUPERIOR
COLD WEATHER
FLEXIBILITY**

The New **ST/SK** is a pre-cut elastomeric insulation with a special pressure-sensitive adhesive. The innovative adhesive **Insul-Lock®** technology is easy and quick to use. This new system is developed to save on installation time and reduce the use of other adhesives, improving work conditions. The new **ST/SK** is flexible and easy to install even under low temperatures.

New

Ideal for the following applications:

- > **REFRIGERATION LINES**
- > **PLUMBING**
- > **HEATING**
- > **AIR CONDITIONING**

K-FLEX ST/SK R A N G E

THICKNESS:	DIAMETER:
9 - 13 - 19 - 25 - 32 mm	6 - 8 - 10 - 12 - 15 - 18 - 22 - 28 - 30 - 35 - 42 - 48 - 54 - 57 - 60 - 64 - 70 - 76 - 80 - 89 - 102 - 108 - 114 mm

T E C H N I C A L D A T A

Temperature range	-50 °C max +90 °C**
Thermal Conductivity λ W/(m·K) EN 12667 (DIN 52612) - EN ISO 8497 (DIN 52613)	-20 °C = 0,034 0 °C = 0,036* +20 °C = 0,038
Conductivity λ W/(m·K) L10 EN 12667 (DIN 52612) - EN ISO 8497 (DIN 52613)	+40 °C = 0,040 W/(m·K)
Corrosion risk	DIN 1988/7*; pH neutral
Permeability μ EN 12086 (DIN 52615)	$\geq 7000^*$
Fire	Cl 1 (I)*, Brandkennziffer 5.2 (CH) BS 476 Part 6 1989 Cl. 0 (UK) - B1 DIN 4102 (DE)*, DIN 4102 TEIL 11 (Wand-und Dechendurchführung) M1- NF (FR), M1 (E), B1 ÖNORM B 3800 (A)

* Supervised by an independent Institute

**For applications at a temperature lower than -50 °C, please contact our Technical Office.

L'ISOLANTE K-FLEX reserve the right to change data and technical requirements without notice.

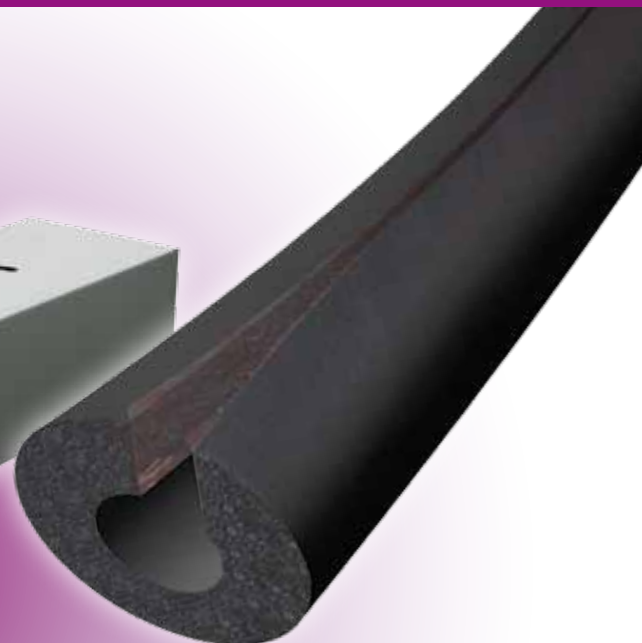
K-FLEX ST/SK

A P P L I C A T I O N



- 1 - Fit the **K-FLEX ST/SK** insulation pipe on the piping.
- 2 - Remove the initial part of the transparent film from both sides.
- 3 - Match well the two adhesive sides.
- 4 - Remove the rest of the film and close the pipe, pressing simultaneously the edges one against the other, to ensure a perfect grip.
- 5 - To complete the installation, just ensure that the pipe is glued perfectly.

K-FLEX ST/SK



K-FLEX ST/SK

COPPER PIPE		IRON PIPE			INSULATION TUBES: Length 2 m				
external Ø mm	Ø nom. DIN	Inches	external Ø mm	Ø nom. DIN	Thick.	Diam.	Description	Product code	m/box
6	4				9	6	9 X 06 ST/SK	09006215603	352
8	6				9	8	9 X 08 ST/SK	09008215603	300
10	8	1/8"	10,2	6	9	10	9 X 10 ST/SK	09010215603	266
12	10				9	12	9 X 12 ST/SK	09012215603	234
15	10/-	1/4"	13,5	8	9	15	9 X 15 ST/SK	09015215603	192
18	15	3/8"	17,2	10	9	18	9 X 18 ST/SK	09018215603	166
22	20	1/2"	21,3	15	9	22	9 X 22 ST/SK	09022215603	136
28	25	3/4"	26,9	20	9	28	9 X 28 ST/SK	09028215603	98
30	25		30		9	30	9 X 30 ST/SK	09030215603	92
35	32	1"	33,7	25	9	35	9 X 35 ST/SK	09035215603	76
42	40	1+1/4"	42,4	32	9	42	9 X 42 ST/SK	09042215603	60
		1+1/2"	48,3	40	9	48	9 X 48 ST/SK	09048215603	50
54	50		54		9	54	9 X 54 ST/SK	09054215603	46
57	50		57		9	57	9 X 57 ST/SK	09057215603	46
		2"	60,3	50	9	60	9 X 60 ST/SK	09060215603	46
76,1	65	2+1/2"	76,1	65	9	76	9 X 76 ST/SK	09076215603	40
88,9	80	3"	88,9	80	9	89	9 X 89 ST/SK	09089215603	36
10	8	1/8"	10,2	6	13	10	13 X 10 ST/SK	13010215603	172
12	10				13	12	13 X 12 ST/SK	13012215603	162
15	10/-	1/4"	13,5	8	13	15	13 X 15 ST/SK	13015215603	136
18	15	3/8"	17,2	10	13	18	13 X 18 ST/SK	13018215603	118
22	20	1/2"	21,3	15	13	22	13 X 22 ST/SK	13022215603	98
28	25	3/4"	26,9	20	13	28	13 X 28 ST/SK	13028215603	78
30	25		30		13	30	13 X 30 ST/SK	13030215603	72
35	32	1"	33,7	25	13	35	13 X 35 ST/SK	13035215603	58
42	40	1+1/4"	42,4	32	13	42	13 X 42 ST/SK	13042215603	48
		1+1/2"	48,3	40	13	48	13 X 48 ST/SK	13048215603	40
54	50		54		13	54	13 X 54 ST/SK	13054215603	34
		2"	60,3	50	13	60	13 X 60 ST/SK	13060215603	32
64			63,5		13	64	13 X 64 ST/SK	13064215603	30
70			70		13	70	13 X 70 ST/SK	13070215603	26
76,1	65	2+1/2"	76,1	65	13	76	13 X 76 ST/SK	13076215603	26
80					13	80	13 X 80 ST/SK	13080215603	24
88,9	80	3"	88,9	80	13	89	13 X 89 ST/SK	13089215603	24
		3+1/2"	101,6/104,3		13	102	13 X 102 ST/SK	13102215603	16
108	100		108		13	108	13 X 108 ST/SK	13108215603	16
114	100	4"	114,3	100	13	114	13 X 114 ST/SK	13114215603	16
10	8	1/8"	10,2	6	19	10	19 X 10 ST/SK	19010215603	98
12	10				19	12	19 X 12 ST/SK	19012215603	88
15	10/-	1/4"	13,5	8	19	15	19 X 15 ST/SK	19015215603	78
18	15	3/8"	17,2	10	19	18	19 X 18 ST/SK	19018215603	72
22	20	1/2"	21,3	15	19	22	19 X 22 ST/SK	19022215603	64
28	25	3/4"	26,9	20	19	28	19 X 28 ST/SK	19028215603	48
30	25		30		19	30	19 X 30 ST/SK	19030215603	42
35	32	1"	33,7	25	19	35	19 X 35 ST/SK	19035215603	36
42	40	1+1/4"	42,4	32	19	42	19 X 42 ST/SK	19042215603	32
		1+1/2"	48,3	40	19	48	19 X 48 ST/SK	19048215603	24
54	50		54		19	54	19 X 54 ST/SK	19054215603	24
		2"	60,3	50	19	60	19 X 60 ST/SK	19060215603	22
64			63,5		19	64	19 X 64 ST/SK	19064215603	18
70			70		19	70	19 X 70 ST/SK	19070215603	18
76,1	65	2+1/2"	76,1	65	19	76	19 X 76 ST/SK	19076215603	18
80					19	80	19 X 80 ST/SK	19080215603	14
88,9	80	3"	88,9	80	19	89	19 X 89 ST/SK	19089215603	14
		3+1/2"	101,6/104,3		19	102	19 X 102 ST/SK	19102215603	14
108	100		108		19	108	19 X 108 ST/SK	19108215603	12
114	100	4"	114,3	100	19	114	19 X 114 ST/SK	19114215603	12
18	15	3/8"	17,2	10	25	18	25 X 18 ST/SK	25018215603	50
22	20	1/2"	21,3	15	25	22	25 X 22 ST/SK	25022215603	42
28	25	3/4"	26,9	20	25	28	25 X 28 ST/SK	25028215603	40
35	32	1"	33,7	25	25	35	25 X 35 ST/SK	25035215603	24
42	40	1+1/4"	42,4	32	25	42	25 X 42 ST/SK	25042215603	22
		1+1/2"	48,3	40	25	48	25 X 48 ST/SK	25048215603	18
54	50		54		25	54	25 X 54 ST/SK	25054215603	16
		2"	60,3	50	25	60	25 X 60 ST/SK	25060215603	12
64			63,5		25	64	25 X 64 ST/SK	25064215603	12
70			70		25	70	25 X 70 ST/SK	25070215603	12
76,1	65	2+1/2"	76,1	65	25	76	25 X 76 ST/SK	25076215603	10
88,9	80	3"	88,9	80	25	89	25 X 89 ST/SK	25089215603	8
108	100		108		25	108	25 X 108 ST/SK	25108215603	6
114	100	4"	114,3	100	25	114	25 X 114 ST/SK	25114215603	6
18	15	3/8"	17,2	10	32	18	32 X 18 ST/SK	32018215603	32
22	20	1/2"	21,3	15	32	22	32 X 22 ST/SK	32022215603	32
28	25	3/4"	26,9	20	32	28	32 X 28 ST/SK	32028215603	24
35	32	1"	33,7	25	32	35	32 X 35 ST/SK	32035215603	22
42	40	1+1/4"	42,4	32	32	42	32 X 42 ST/SK	32042215603	16
		1+1/2"	48,3	40	32	48	32 X 48 ST/SK	32048215603	14
54	50		54		32	54	32 X 54 ST/SK	32054215603	12
		2"	60,3	50	32	60	32 X 60 ST/SK	32060215603	10
64			63,5		32	64	32 X 64 ST/SK	32064215603	10
70			70		32	70	32 X 70 ST/SK	32070215603	8
76,1	65	2+1/2"	76,1	65	32	76	32 X 76 ST/SK	32076215603	8
80					32	80	32 X 80 ST/SK	32080215603	8
88,9	80	3"	88,9	80	32	89	32 X 89 ST/SK	32089215603	8
		3+1/2"	101,6/104,3		32	102	32 X 102 ST/SK	32102215603	6
114	100	4"	114,3	100	32	114	32 X 114 ST/SK	32114215603	6



L'ISOLANTE K-FLEX

via Don Locatelli, 35 - 20040 Roncello (MI) Italy
tel.: +39 039 68241 - fax: +39 039 6824560
internationalsales@isolante.com - www.kflex.com